



SUBNERO WIRELESS INTEGRATED SUITE

ADCP Edition

Integrated Wireless Data Transfer Solution for ADCP

Key Benefits



Wireless Data Transfer

Access ADCP data in near real-time over reliable wireless links



Seamless User Experience

Web-based UI for data summarisation and downloads



Cost Efficiency

Reduce deployment costs through streamlined operations

Intended Audience



Marine Survey Operators



Offshore Energy Operators



Oceanographers



Marine Researchers

CHALLENGES

ADCPs are essential for subsea operations, but data retrieval is challenging due to:

Costly Logistics

Retrieving devices with divers or relying on cabling is expensive and risky

Limited Scalability

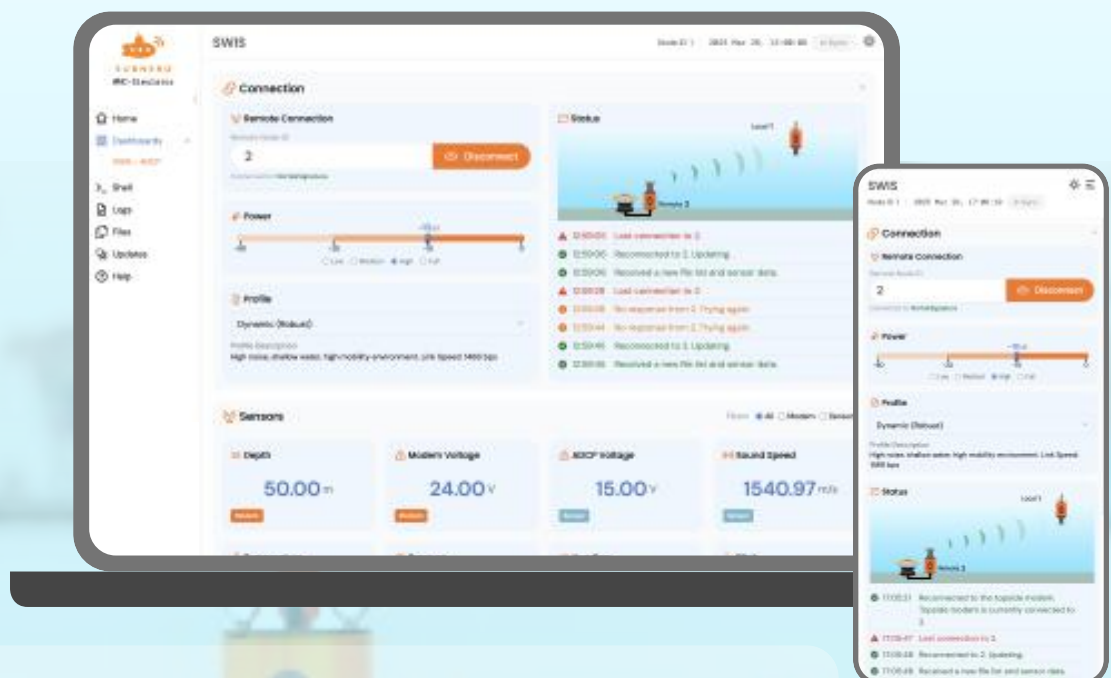
Difficult to manage multiple simultaneous ADCP deployments

Connectivity Issues

Traditional acoustic modems suffer from unreliable performance and poor user experience.

SOLUTIONS

SWIS – ADCP Edition integrates Subnero's WNC series acoustic modems with ADCPs for seamless wireless monitoring and data transfer. It simplifies underwater data collection, providing a reliable and user-friendly solution for accessing ADCP data wirelessly.



SWIS – ADCP Edition supports direct laptop or smartphone access with an intuitive UI, as well as integration with cloud servers, FTP servers, and data loggers for automated data collection.

HOW SWIS – ADCP EDITION WORKS?

01

Configuration Phase

Simple setup and configuration for user's deployment needs.

02

Deployment Phase

Monitor deployment using On-Demand or On-Schedule modes.

OPERATIONAL MODES



ON-DEMAND

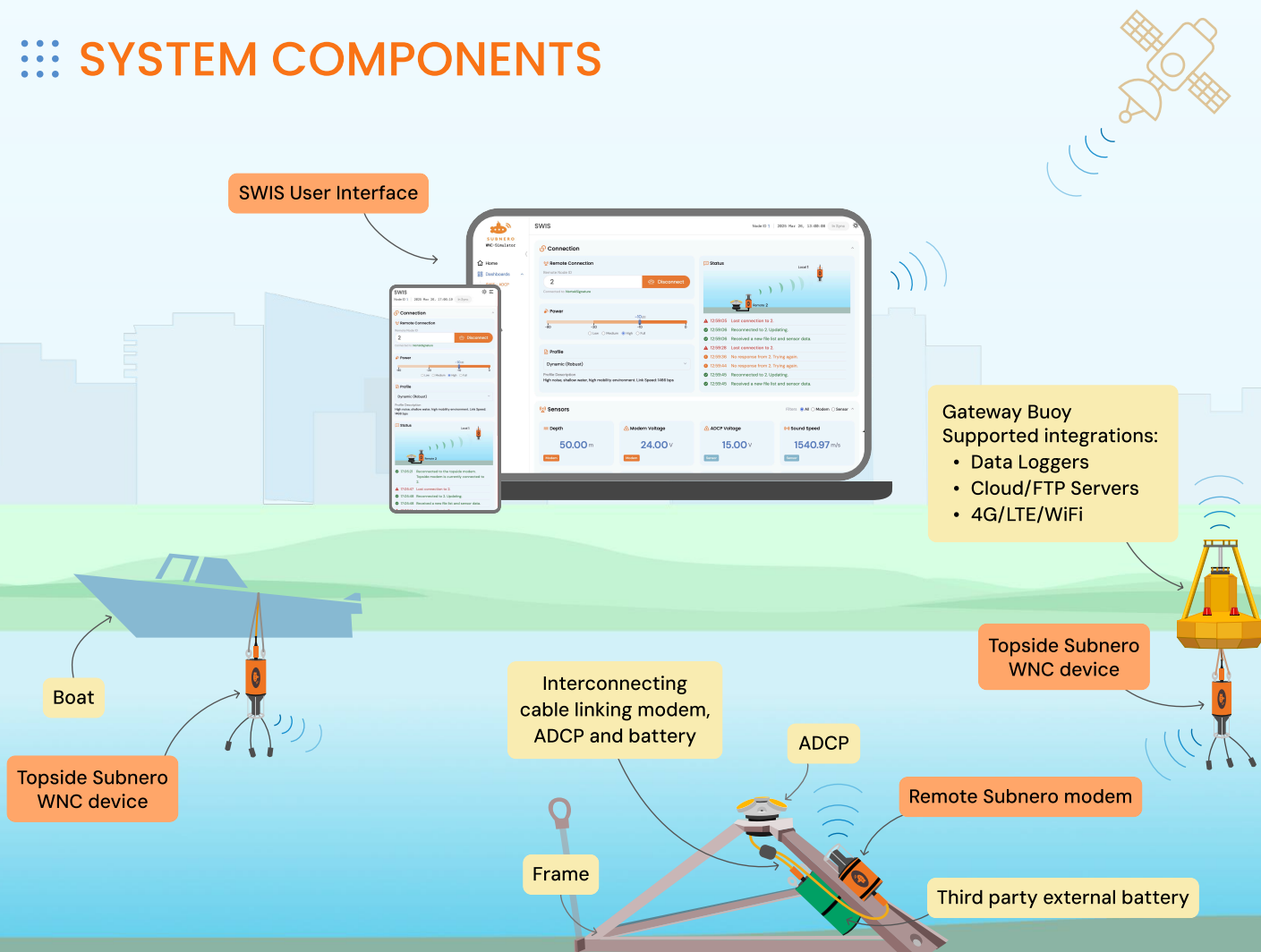
Access and download specific data instantly via an intuitive browser interface.



ON-SCHEDULE

Automate data transfers at regular intervals for continuous monitoring.

SYSTEM COMPONENTS



SWIS Features



Data Summarisation

CAP engine provides data summary of entire deployments



Early Fault Detection

Monitor ADCP status, including mode, pitch and battery voltage



Adaptive Scheduling

Flexible schedules to accommodate diverse concepts of operations



Remote Control

Configure deployment settings remotely during deployment



Performant Wireless

High-performance acoustic link for reliable data transfer.



Seamless UI

Intuitive user interface for easy configuration, monitoring, and control

Technical Specifications

FEATURES	DETAILS
Supported Modems	Subnero WNC Series
Storage	32 GB (Upgradable To 1 TB)
Connectivity	Ethernet, RS232
Endurance	Up To 6 Months**
Supported Integrations	Data Loggers, Cloud/FTP Servers, 4G/LTE/WiFi Routers
User Interface	Web-Based Dashboards, REST APIs, Unet APIs

*** Depends on deployment parameters such as frequency of data transfer*

Transform your underwater sensor data management with SWIS – ADCP Edition

Contact us to learn how SWIS can enhance your ADCP deployment operations!



Get in touch now

Subnero Pte. Ltd., 1003 Bukit Merah Central #04-05, Singapore 159836

✉ sales@subnero.com ☎ +65 9819 9552 🌐 www.subnero.com

📘 subnero 📺 subnero_comms 📧 subnero 🌐 subnero 📺 subnero